



Planet Brass Pop-Up Brass



With Mr. Rose



Pop-up Brass

Lesson 6

'Still Feeling Blue'



BEAT =

1

2

3

4

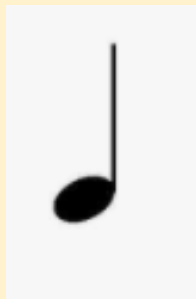
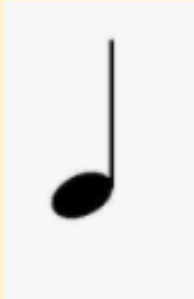
1.



2.



3.



4.



RHYTHM MIX-UP

Listen to and copy the rhythms Mr. Rose plays.



'RHYTHM STOMP' WITH THE BLUES BROTHERS



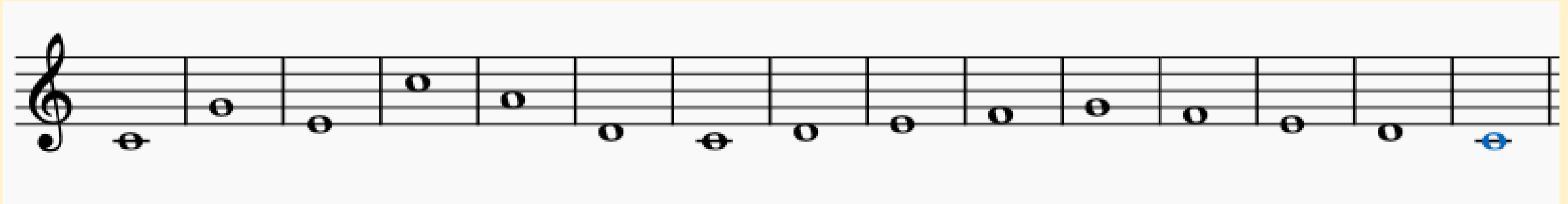
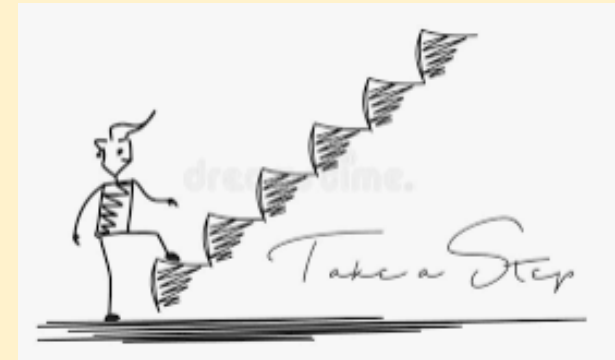
FIRSTLY,
COPY
MR.
ROSE

1-2-3-4

CHOOSE A
RHYTHM
FOR
OTHERS TO
COPY

ONLY CHANGE
YOUR
RHYTHM
WHEN THE
OTHERS HAVE
'GOT IT'!!

As the teachers calls out each number, show with your hands how the notes go up and down (or stay the same!)



1 2 3 4 5 6 7 8 9 10 11 12 13 14 15



Answer these questions.....

higher pitch, lower pitch, same pitch, step or leap

Can you play these notes?



E

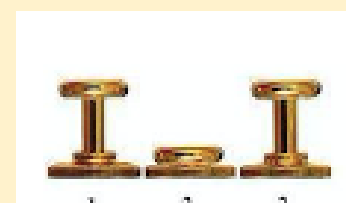
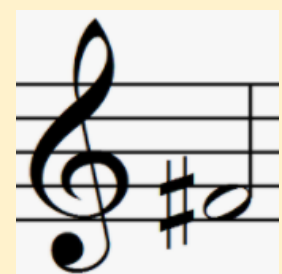


1 2 3



4th position

F#

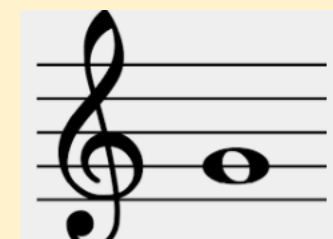


1 2 3

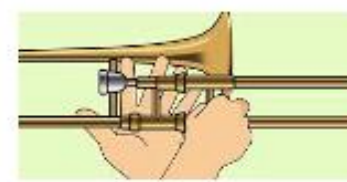


2nd position

G



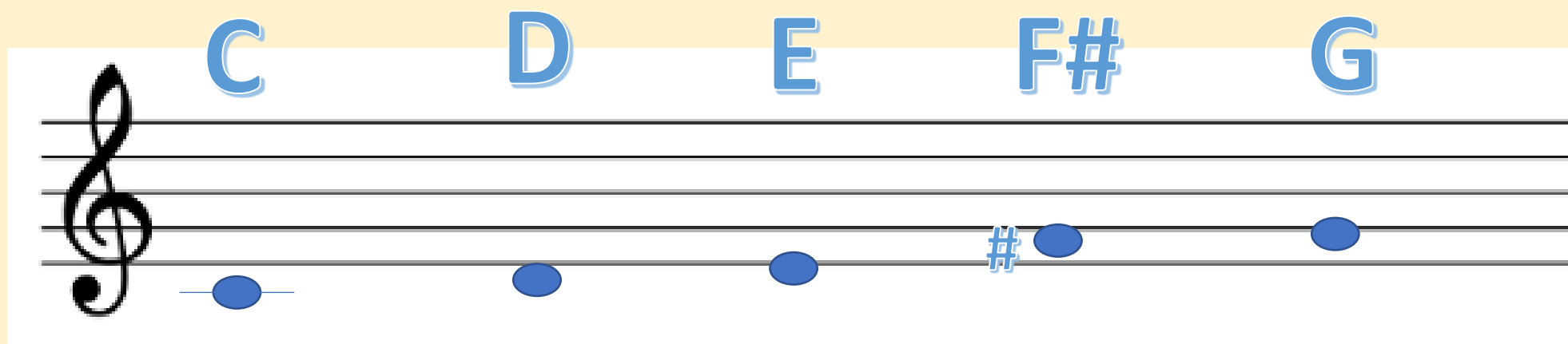
1 2 3



1st position (slide all the way in)

How many beats in a bar?

Play the notes C, D, E, F# and G



A musical staff in treble clef showing five notes: C, D, E, F#, and G. The notes are placed on the first line of the staff. Above each note is its letter name in blue. Below the staff, the fingering for each note is indicated: Open for C, 1/3 for D, 1/2 for E, 2 for F#, and Open for G. A blue sharp sign is placed above the F# note.

Open

1 / 3

1 / 2

2

Open



1st
position

6th
position

4th
position

2nd
position

1st
position



Jools' Blues



There are 4 bars of introduction....

brass
and
clarinet

Jools' Blues

E E E E G G E E F# F# E E

Flute,
keyboard,
violin and
guitar

Jools' Blues

D D D D G G D D A A D D

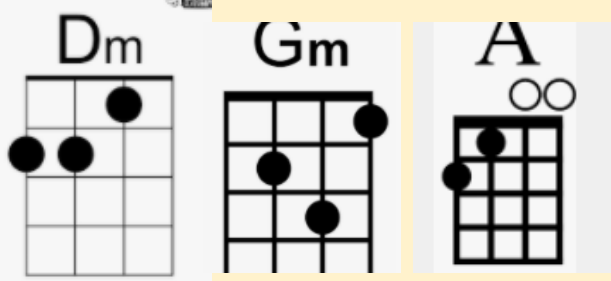
Jools' Blues



Change the rhythm!

Copy the teacher's melodic phrase!

Answer the teacher's melodic phrase!



brass
and
clarinet

Jools' Blues

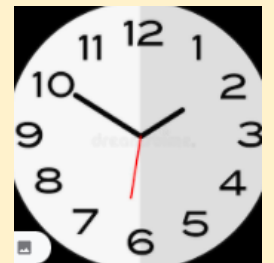
E E E E G G E E F# F# E E

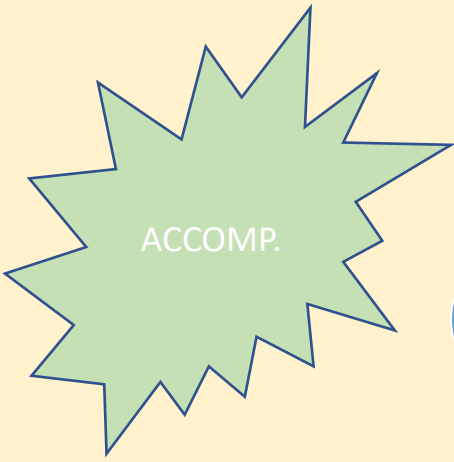
Flute,
keyboard,
violin and
guitar

Jools' Blues

D D D D G G D D A A D D

Drums – 10 to 2...

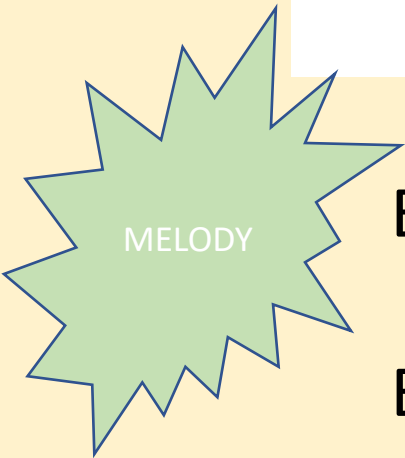




C - - - C - - - D - - - C - - -
 C - - - C - - - D - - - C - - -

Ma - ry had a lit - tle lamb, lit - tle lamb, lit - tle lamb.

Ma - ry had a lit - tle lamb, its fleece was white as snow.



E D C D | E E E _ | D D D _ | E E E _
 E D C D | E E E E | D D E D | C _ _ _

WHAT HAVE WE LEARNED IN LESSON 6?



Playing the BLUES



Copying MELODIC PHRASES

Playing the notes C, D, E, F# and G

Answering MELODIC PHRASES

Recognising differences in pitch

Recognising 3 beats in a bar as well as 4 beats in a bar

