



# Planet Brass Pop-Up Brass



With Mr. Rose



# Pop-up Brass

## Lesson 5

### 'Feeling Blue'



# STOMP WITH THE BLUES BROTHERS



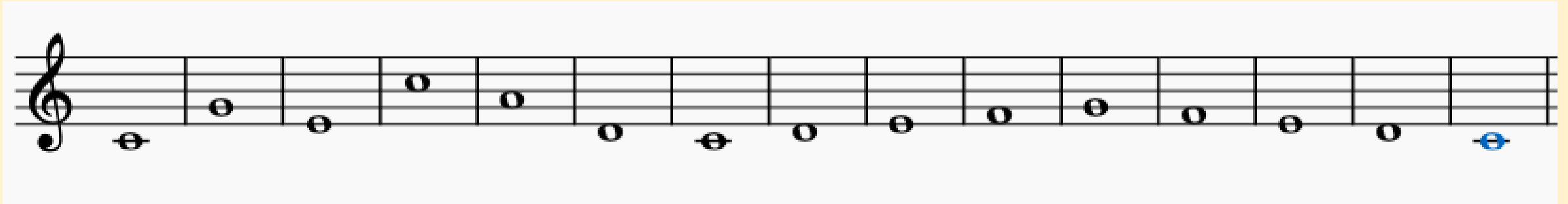
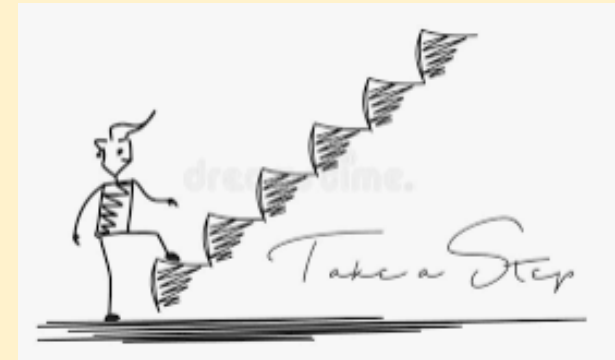
KEEP TO  
THE BEAT  
– COUNT  
1-2-3-4

INVENT  
YOUR  
OWN  
RHYTHM  
PATTERN

DON'T  
CHANGE  
TOO  
OFTEN

BE  
CREATIVE!

As the teachers calls out each number, show with your hands how the notes go up and down (or stay the same!)



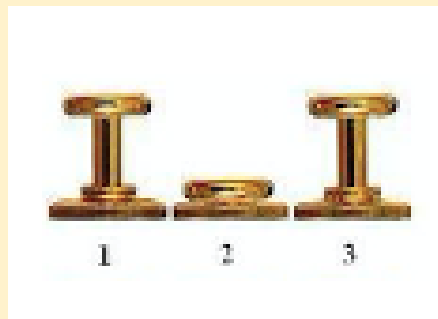
1 2 3 4 5 6 7 8 9 10 11 12 13 14 15



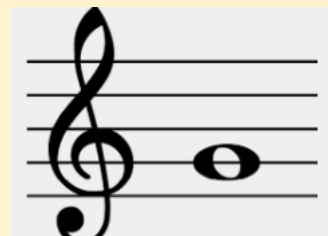
**Answer these questions.....**

higher pitch, lower pitch, same pitch, step or leap

# F#



# G



# New notes....



1<sup>st</sup> position (slide all the way in)



# Jools' Blues



There are 4 bars of introduction....

brass  
and  
clarinet

**Jools' Blues**

E E E E G G E E F# F# E E

Flute,  
keyboard,  
violin and  
guitar

**Jools' Blues**

D D D D G G D D A A D D

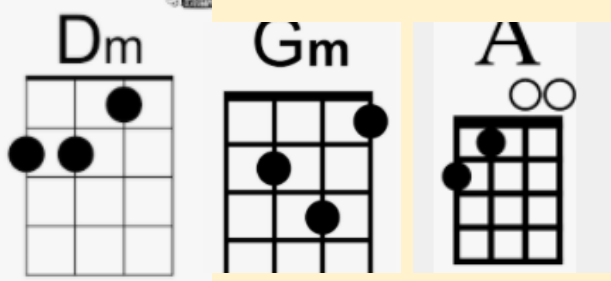
# Jools' Blues



Change the rhythm!

Copy the teacher's melodic phrase!

Answer the teacher's melodic phrase!



brass  
and  
clarinet

### Jools' Blues

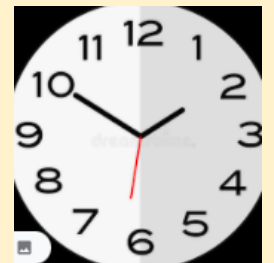
E E E E G G E E F# F# E E

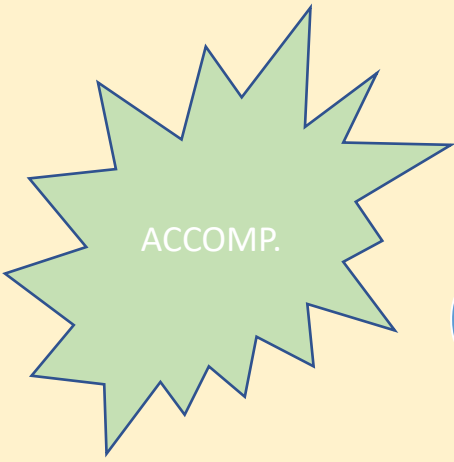
Flute,  
keyboard,  
violin and  
guitar

### Jools' Blues

D D D D G G D D A A D D

Drums – 10 to 2...

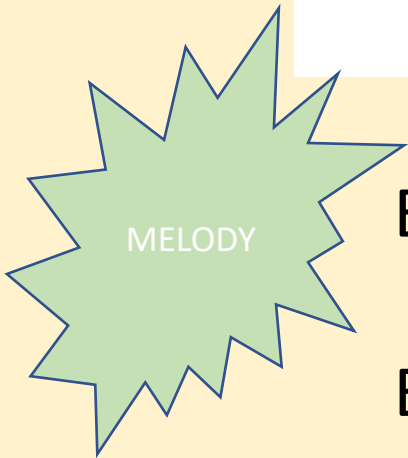




C - - - C - - - D - - - C - - -  
 C - - - C - - - D - - - C - - -

Ma - ry had a lit - tle lamb, lit - tle lamb, lit - tle lamb.

Ma - ry had a lit - tle lamb, its fleece was white as snow.



E D C D | E E E \_ | D D D \_ | E E E \_  
 E D C D | E E E E | D D E D | C \_ \_ \_



# WHAT HAVE WE LEARNED IN LESSON 5?



Playing the BLUES



Copying MELODIC PHRASES

The notes F# and G on a brass instrument

Recognising differences in pitch

Answering MELODIC PHRASES

