



Planet Brass Pop-Up Brass



With Mr. Rose

More about the Orchestra





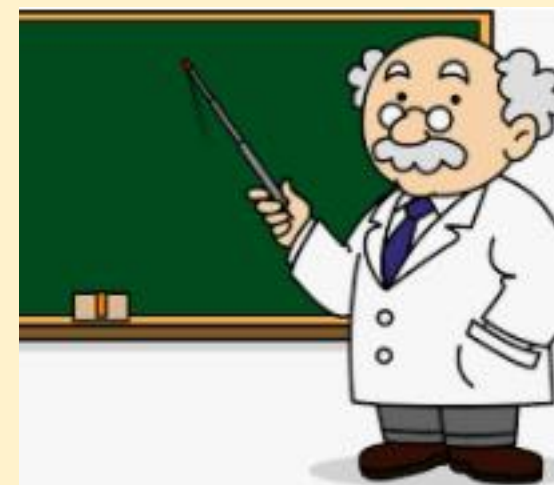
Pop-up Brass

Lesson 2

Play-Along with an Orchestra



Brass instruments pop up everywhere. They are 'XXXXXXXXXX'!



Listen and Move!



Listen carefully to the music. The rhythms will either be walk or jogging. WALK OR JOG to whatever you hear!

1. What are the 4 sections on an orchestra?



2. Which instrument is used to tune an orchestra?



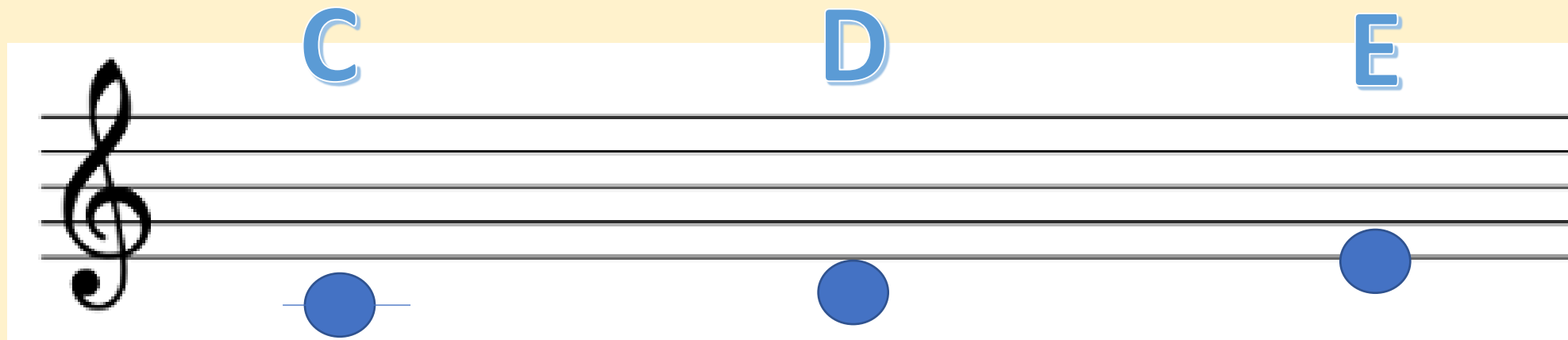
Trumpet
Trombone
French horn
tuba



3. Name 4 different types of brass instruments in an orchestra.



The notes C, D and E



Open

1st position

1 / 3

6th position

1 / 2

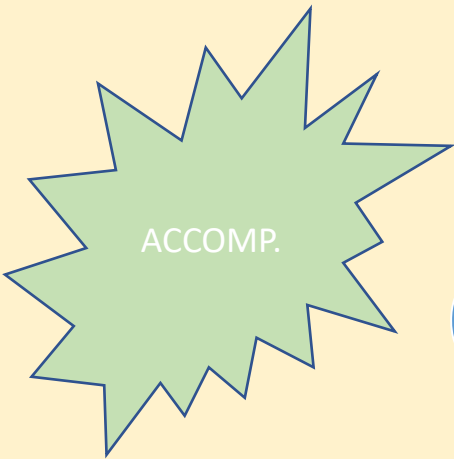
4th position



Play-Along with an Orchestra



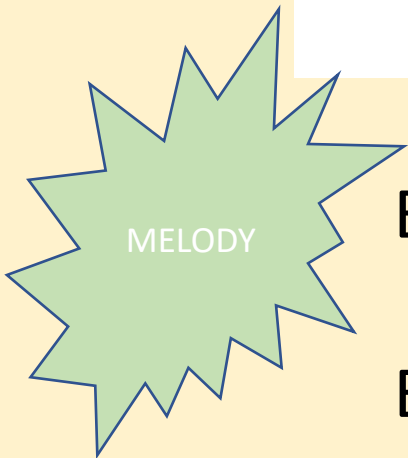
C - - - C - - - C - - - D - - -
E - - - E - - - E - - - D - - -



C - - - C - - - D - - - C - - -
 C - - - C - - - D - - - C - - -

Ma - ry had a lit - tle lamb, lit - tle lamb, lit - tle lamb.

Ma - ry had a lit - tle lamb, its fleece was white as snow.



E D C D | E E E _ | D D D _ | E E E _
 E D C D | E E E E | D D E D | C _ _ _

WHAT HAVE WE LEARNED IN LESSON 2?



WALKING TO
'JOGGING AND
'WALK'

THE DIFFERENT
BRASS INSTRUMENTS
IN AN ORCHESTRA



PLAYING 'STAR WARS'

PRACTISING THE
NOTES C, D and E

READING MUSIC TO PLAY

'MARY HAD A LITTLE LAMB'

