



Planet Brass
Pop-Up Brass



CONCERT



Time to play....



3. Leave a small gap
(aperture)



1. Tiger Teeth



2. Feed the
tiger



4. Put a mouthpiece to your
lips





1 - 2 - 3 - 4



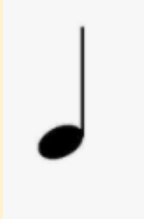
1 - 2



1 - 2



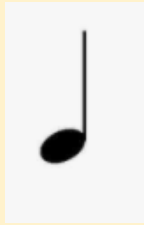
1



1



1



1

THE BEAT IS GROUPED INTO 4

- Copy Mr. Rose
- Choose one of the rhythms with which to answer



1 +



1 +



1 +



1 +

Taylor Swift – Shake it Off!



Get into groups..

Flute,
keyboard,
violin and
guitar

Two staves of musical notation in 4/4 time. The first staff has a treble clef and a 4/4 time signature. The notes are quarter notes on the G4 line. The second staff has a treble clef and a 4/4 time signature. The notes are quarter notes on the G4 line, then quarter notes on the D5 line, then quarter notes on the G4 line, then quarter notes on the D5 line.

A A A A A A A A G G G G G G G G
G G G G G G G G D D D D D D D D

Try a different
rhythm –
“Shake it off”

Rehearse a
group at a
time!

Guitar/Ukulele
Chords
Am Am C C
G G G G



brass and
clarinet

One staff of musical notation in 4/4 time with a treble clef. The notes are quarter notes on the D5 line.

D D D D D D D D D D D D D D D D



Play-Along with an Orchestra

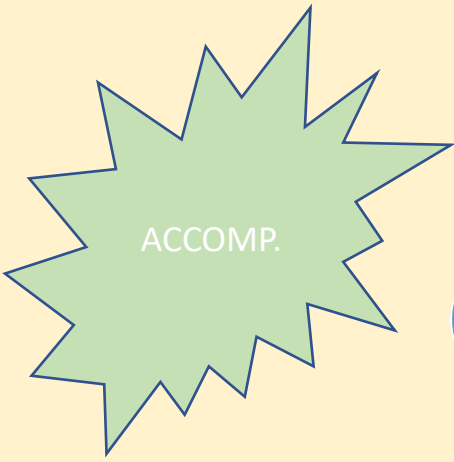


Brass and
Clarinet

C - - - C - - - C - - - D - - -
E - - - E - - - E - - - D - - -

Flute,
keyboard,
violin and
Guitar

D - - - D - - - D - - - A - - -
D - - - D - - - D - - - A - - -

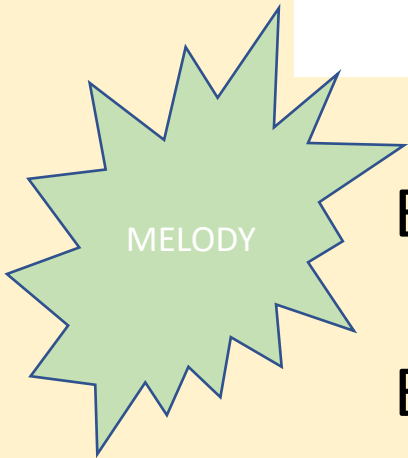


C - - - C - - - D - - - C - - -
 C - - - C - - - D - - - C - - -

5

Ma - ry had a lit - tle lamb, lit - tle lamb, lit - tle lamb.

Ma - ry had a lit - tle lamb, its fleece was white as snow.



E D C D | E E E _ | D D D _ | E E E _
 E D C D | E E E E | D D E D | C _ _ _



Quiz time



didgeridoo



clarinet



guitar

Name the instruments



flute



violin



keyboard



Drum-kit



tuba



cello

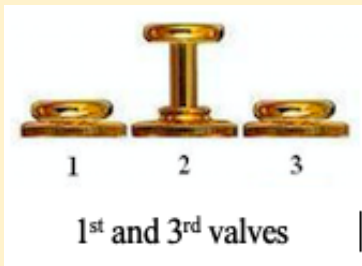


French horn

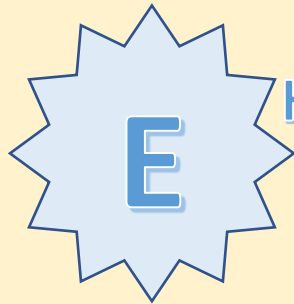


Can you play these notes?

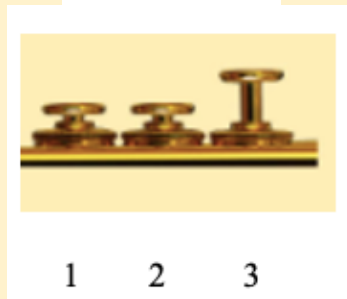
D



1st and 3rd valves

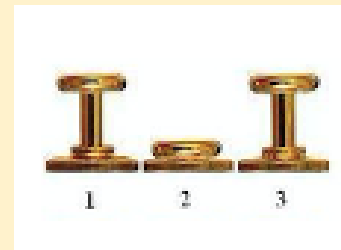


Home note



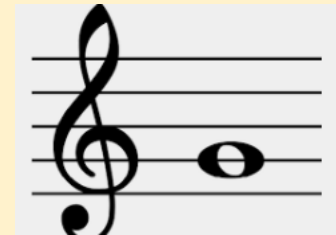
1 2 3

F#



1 2 3

G



1 2 3



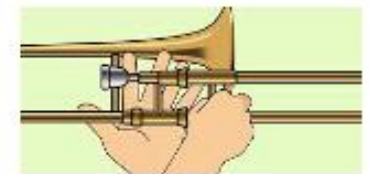
trombone, 6th position



4th position



2nd position



1st position (slide all the way in)

Jools' Blues



There are 4 bars of introduction....

brass
and
clarinet

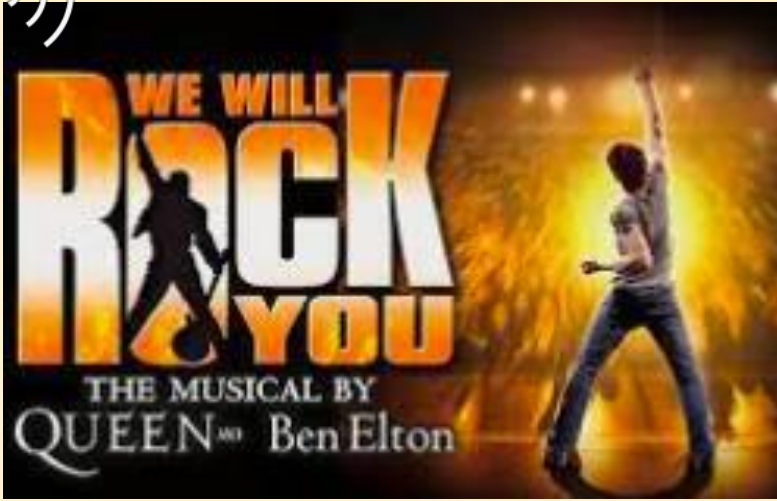
Jools' Blues

E E E E G G E E F# F# E E

Flute,
keyboard,
violin and
guitar

Jools' Blues

D D D D G G D D A A D D



BRASS

G We F# will, E we D will E E rock you!

FLUTE, GUITAR

F.. E.. D.. C.. DD

G...F#...E.. D... EE

UKULELE

GUITAR

Dm

x x o

VIOLIN, KEYBOARD, GUITAR

D.. D.. A.. A.. DD

We hope you enjoyed the concert



Planet Brass

